

# How to flash the ECU using the DIUS Flasher.

1. Connect the MPI-2 adapter to the USB port on your computer.
2. Connect the cable CAN to adapter MPI-2 and to the diagnostic connector of the vehicle.



3. Place the DESS key on the "Safety Switch" of the vehicle.



4. Run the DIUS Flasher Program.
5. **Very carefully read the "Terms of Use".**





- Click on "**READ ECU**" to establish communication with the ECU.



- From the database, select your firmware. Below is a screenshot of the example firmware 420665861.

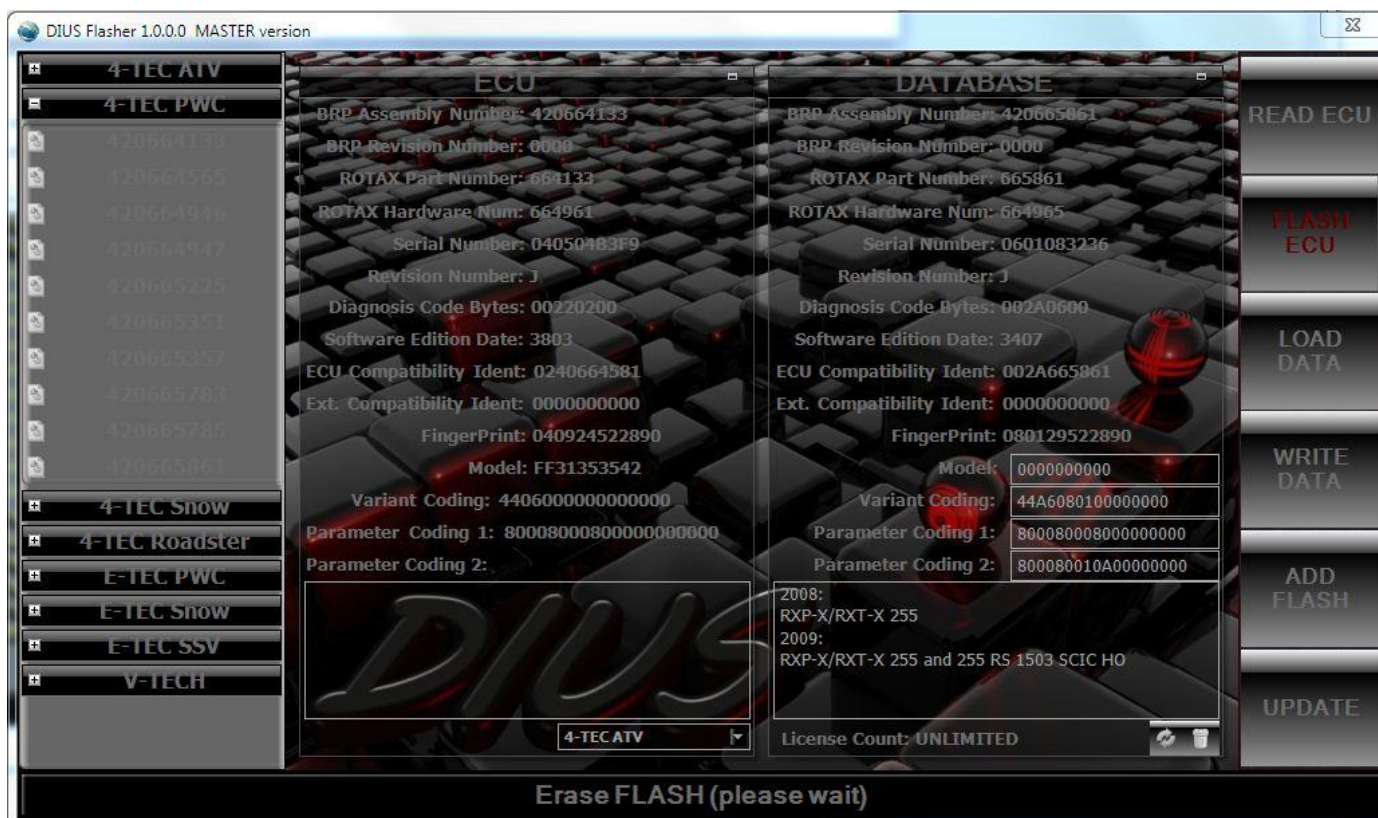




8. Click on "**FLASH ECU**" to begin the process of replacing the ECU firmware.
9. Read the warning and click "**OK**".

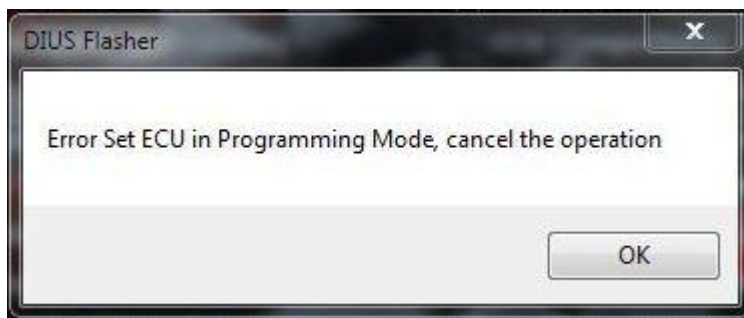


The program will start the process of writing the firmware, selected from the database.



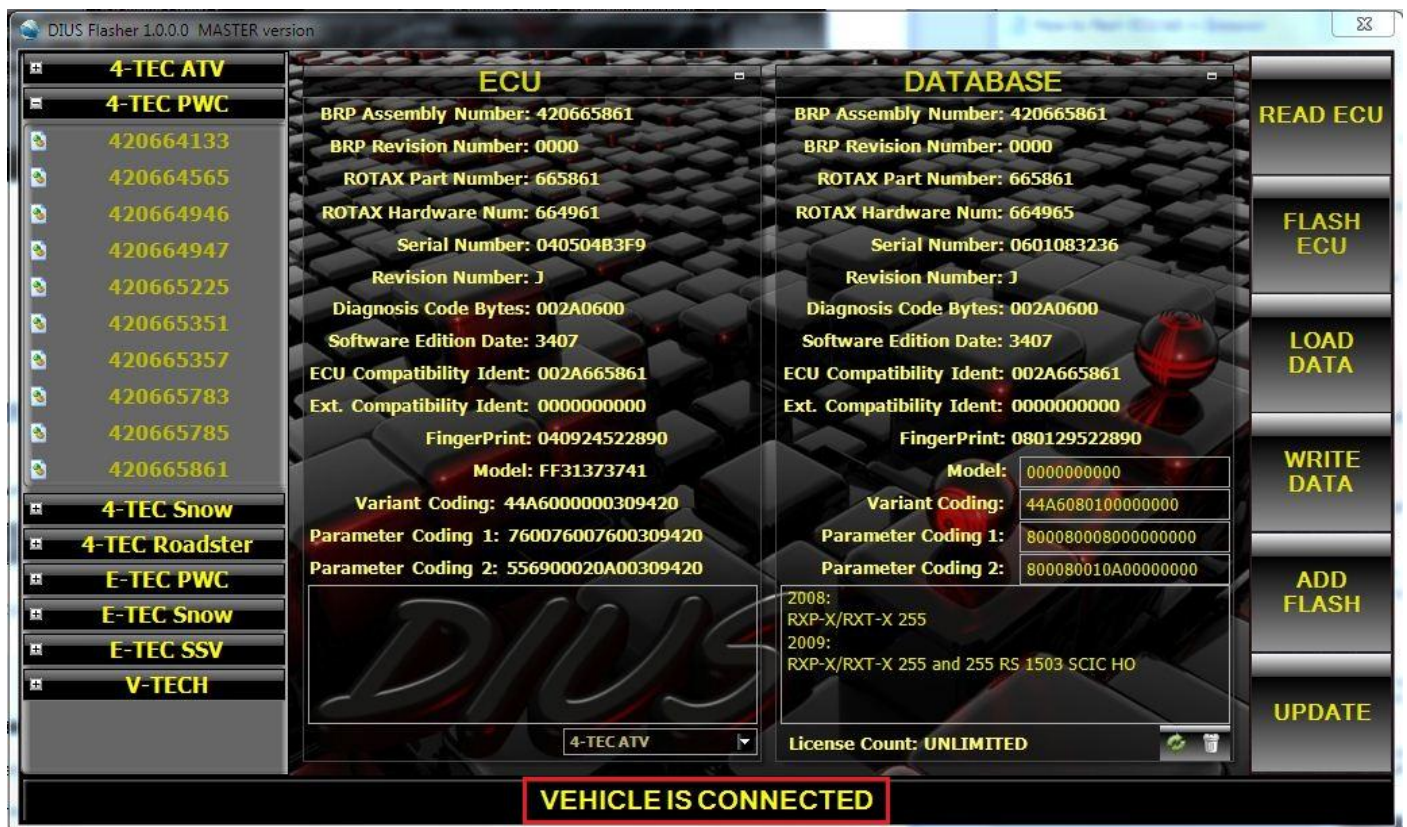


If you got a window with an error, go to step 12.



10. Expect the end of the process of flashing.

The message "**VEHICLE IS CONNECTED**" in the status bar means the successful completion of the process.



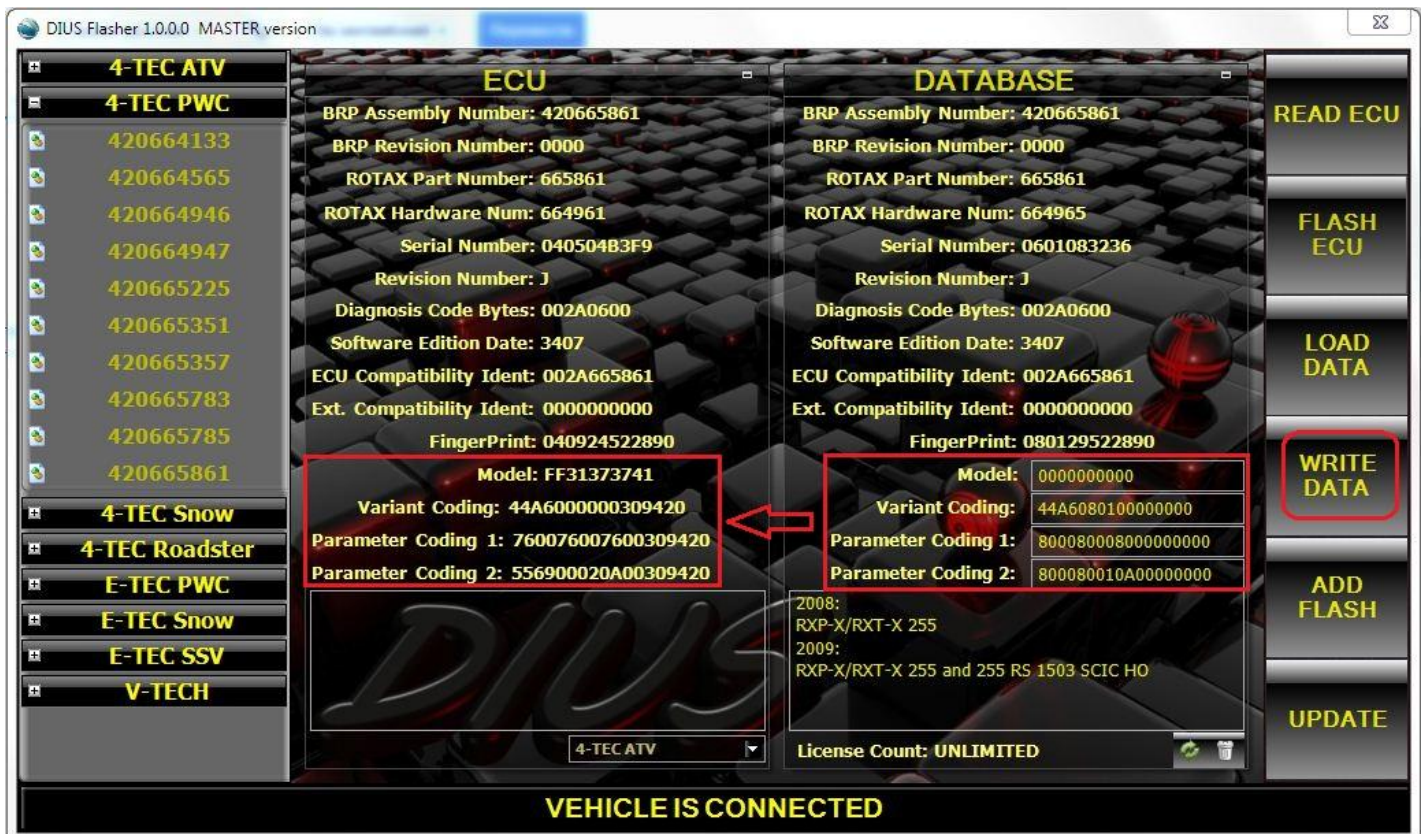
If you got a window with an error, rather than "VEHICLE IS CONNECTED" in the status bar, go to step 12.

If you used a DIUS Flasher to restore the default firmware of ECU (before starting, firmware from the database is identical to that which was in the ECU, see screenshot below), then the process is considered completed.

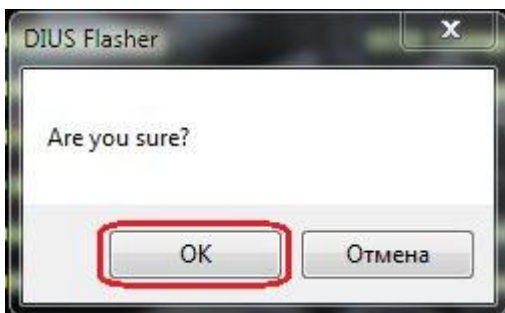


If you used a DIUS Flasher to replace the firmware of ECU (before starting, firmware from the database was not identical to that which was in the ECU), then you need to take the next step 11.

11. Compare the data shown in the screenshot below.



Click on the "**WRITE DATA**". In the window that appears, click "**OK**".



Click on "**READ ECU**" and compare the data again.

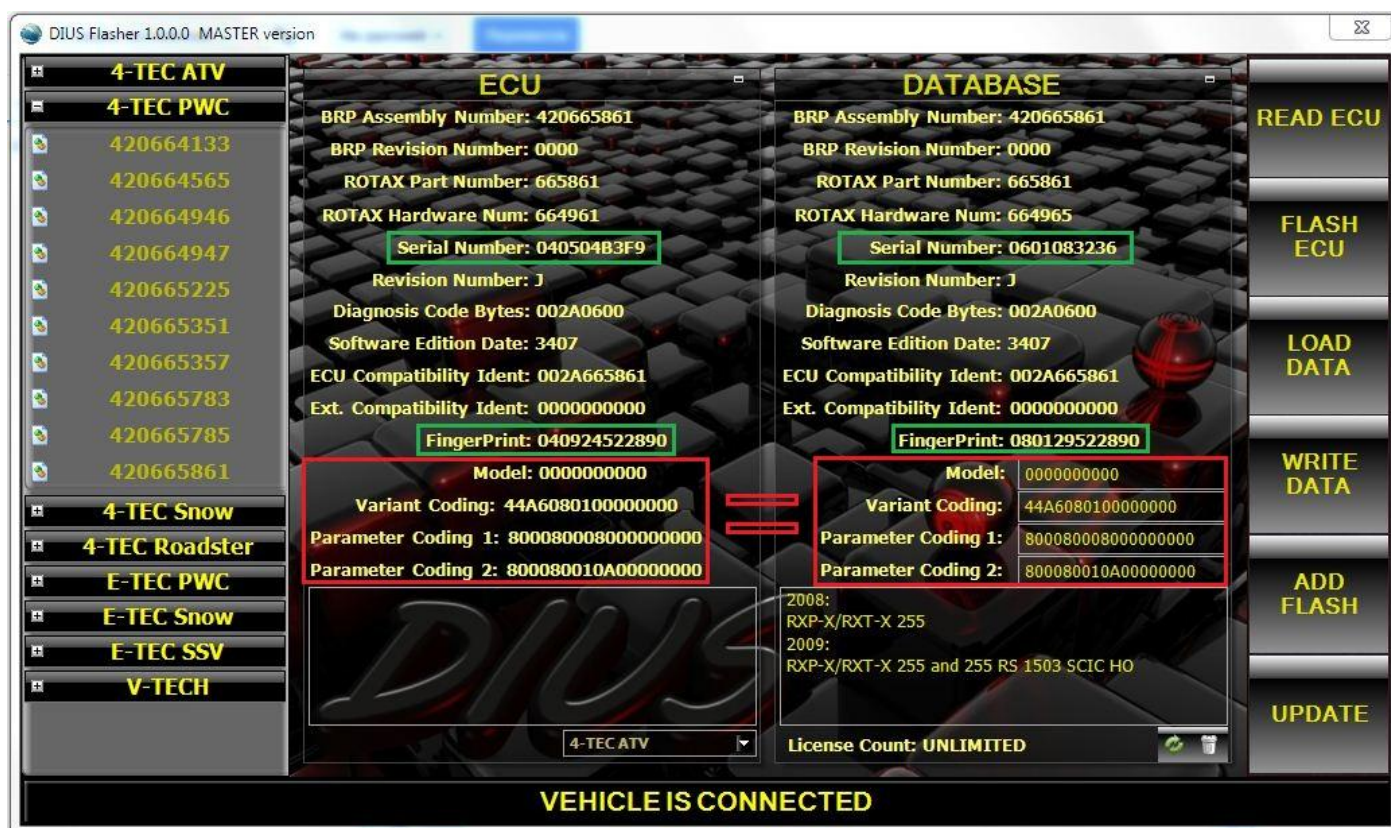
The data that are highlighted in red should be identical.

If the data do not match, then click on the "**WRITE DATA**" again.

Click on "**READ ECU**" and compare the data.

Data that are highlighted in green, should not (and can not) be identical.





The process of the replacing of firmware is completed.

To change the "VIN" and "Engine" numbers, to match the data of your vehicle, use the BUDS with the rights of license **Megatech**.

**To purchase license Megatech contact your dealer.**

12. If you got a window with an error, do the following:

- Close the program.
- Remove the DESS key.
- Disconnect cable CAN and wait a few minutes.
- Repeat steps 2-11.